

17. Appendix

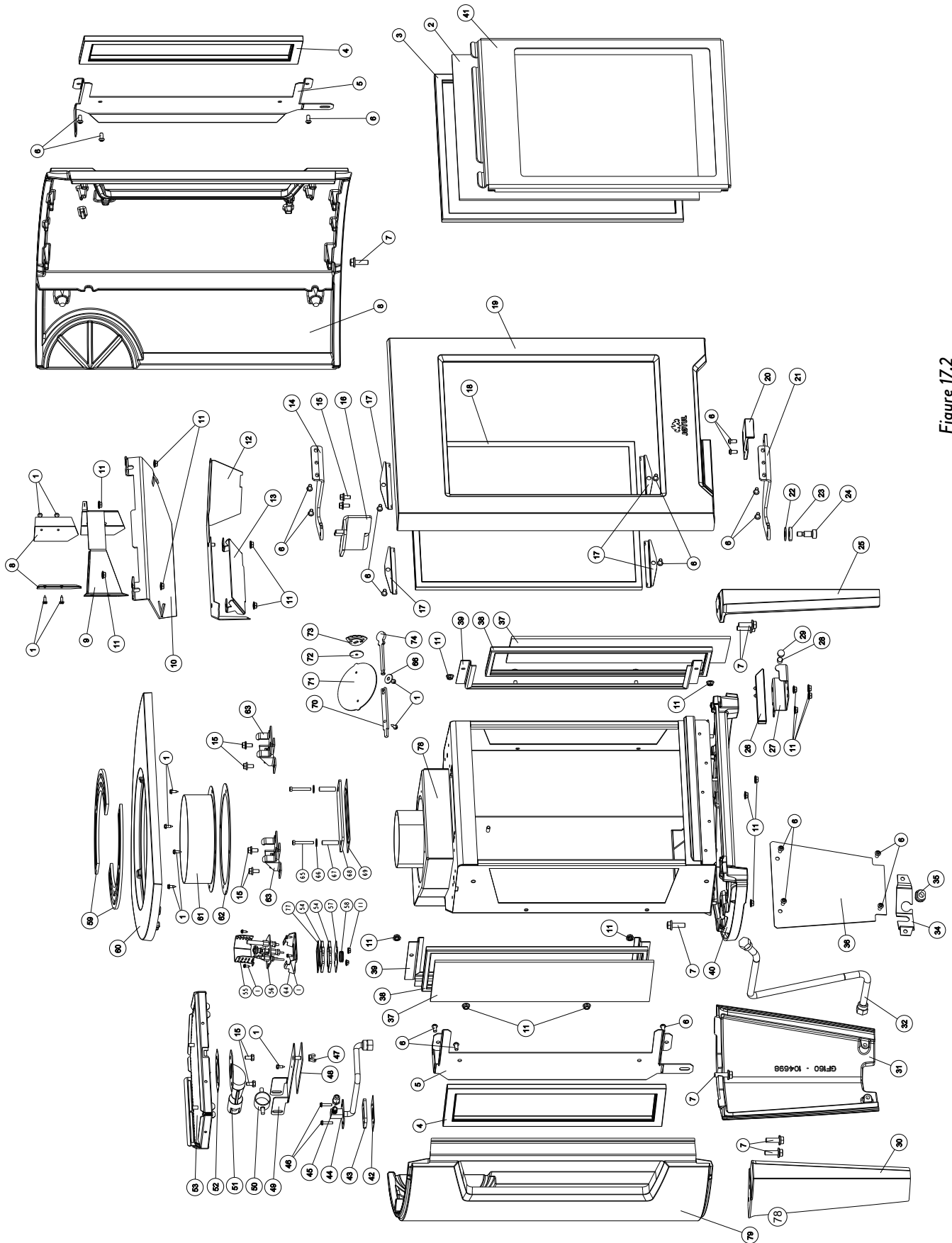


Figure 17.2
GF 160 DV Firebox and Cast Iron Assembly

No.	Part No.	Description
1.	117917	Screw, #8 x 1/2" SM Blk Oxide
2	158067	Glass, Ceramic, Front, 5mm (.197")
3	129124	Gasket, Tadpole, .25 X 1.25 I, Graphite, Self Adhesive
4	225952	Screen Assembly, Side
5	22595392	Retainer, Side Screen - MB
6	118034	Bolt, M6 x 12 Button Head Socket
7	117876	Bolt, M8 x 25, Hex Serr Flng Hd, Class 8.8, Blk Oxid
8	10480292	Side Plate, Right, Matte Black Paint
9	226249	Baffle Wing
10	22603392	Exhaust Baffle - Matte Black
11	117968	Nut, M6 Serrated Flange plain
12	22603292	Burner Skirt, - Matte Black
13	226260	Air Deflector, Under Skirt
14	22603492	Door Hinge, Upper - Matte Black
15	117130	Bolt, Hex Head Serr Flange M6x12 Blk
16	22603592	Bracket, Door Hinge Upper - Matte Black
17	12601192	Glass Clip w/o gasket - Matte Black
18	225950	Screen Assembly, Front
19	158069	Door, Matte Black Paint
20	10482392	Handle, Primary Air - Matte Black
21	22625892	Door Hinge, Lower - Matte Black
22	117587	Washer, Door Handle, M6 X 18mm OD x 1.6mm
23	226213	Spacer, Door Hinge, .188"
24	118239	Screw, Shoulder, M8x13 Thd, 10mmx16mm Shldr,
25	10481492	Leg, Right - Matte Black
26	10482292	Door Filler - Matte Black
27	22603892	Bracket, Door Handle - Matte Black
28	225338	Magnet, .375" Dia x .25", Neo High Temp
29	224909	Cap, Silicone, .375" ID x .250" DP
30	10481292	Leg, Left - Matte Black
31	10469892	Rear Leg - Matte Black
32	226310	Flex tube, 36" x 3/8 OD Gas Supply
34	22606892	Retainer, Electric & Gas Supply - Matte Black
35	117951	Wire Strain Relief, Heyco 7P-2 (Large)
36	22605092	Rear Cover, Supply Lines - Matte Black
37	158080	Glass, Ceramic, Side, 5mm (.197") INC. Gasket, #38
38	225961	Gasket, Woven Tape, .187" x .750"
39	22595492	Retainer, Side Glass - Matte Black

No.	Part No.	Description
40	158068	Base Plate - Matte Black
41	22595192	Glass Frame - Matte Black
42	222280	Gasket, Drop In Orifice Holder
43	226247	Shim, Drop in Orifice Holder
44	223231	Orifice Holder, Drop In Assembly, 12.5" Tube
45	226255	Orifice, 2.45mm, NG
46	117986	Screw, #8 X 3/4 SL HWH SMA ZINC
47	117975	Nut, Wing M6 Zinc
48	226263	Gasket, Shutter Handle, GF 160 DV IPI
49	226054	Handle, Air Shutter, GF 160 DV IPI IPI
50	224903	Air Shutter Ass'y, .75" Window
51	157604	Venturi Weldment, inc. w/ #53
52	224790	Burner Gasket, inc. w/ #53
53	158071	Replacement Burner Assembly
54	226963	Pilot Spacer, Under Mount, GF 160
55	224917	Pilot Shield, Milivolt, GF 160
56	129471	Pilot Assembly, NG, 820 Valve, SIT 0199769
	129472	Pilot Orifice NG #51
	129473	Pilot Orifice LP #30
	129446	Pilot Line w/ Fitting
	129766	Thermocouple
	129765	Electrode
	3094527	Thermopile
	220384	Pilot Hood, 3 Flames, Nova 820 Pop Top
57	226964	Pilot Grommet Mounting Plate, GF160
58	225525	Grommet, Silicone, Pilot Plug
59	22299592	Top Grill, 2 - Matte Black
60	158072	Top Plate - Matte Black
61	129322	Adapter Pipe, 6.625 dia
62	129118	Gasket, Starter
63	22009192	Latch, Glass Frame / MB
68	226965	Relief Door, GF160 DV No Light
70	226026	Inner Rod, Exhaust Restrictor, GF 160 DV IPI
71	226025	Exhaust Restrictor Plate, GF 160 DV IPI
72	223241	Gasket, Exhaust Restrictor
73	22602492	Washer, Exhaust Restrictor - Matte Black
78	10480392	Side Panel, Matte Black Paint

GF 160 DV IPI Illustrated Parts Breakdown

Use only parts available from
Jatul authorized dealers.

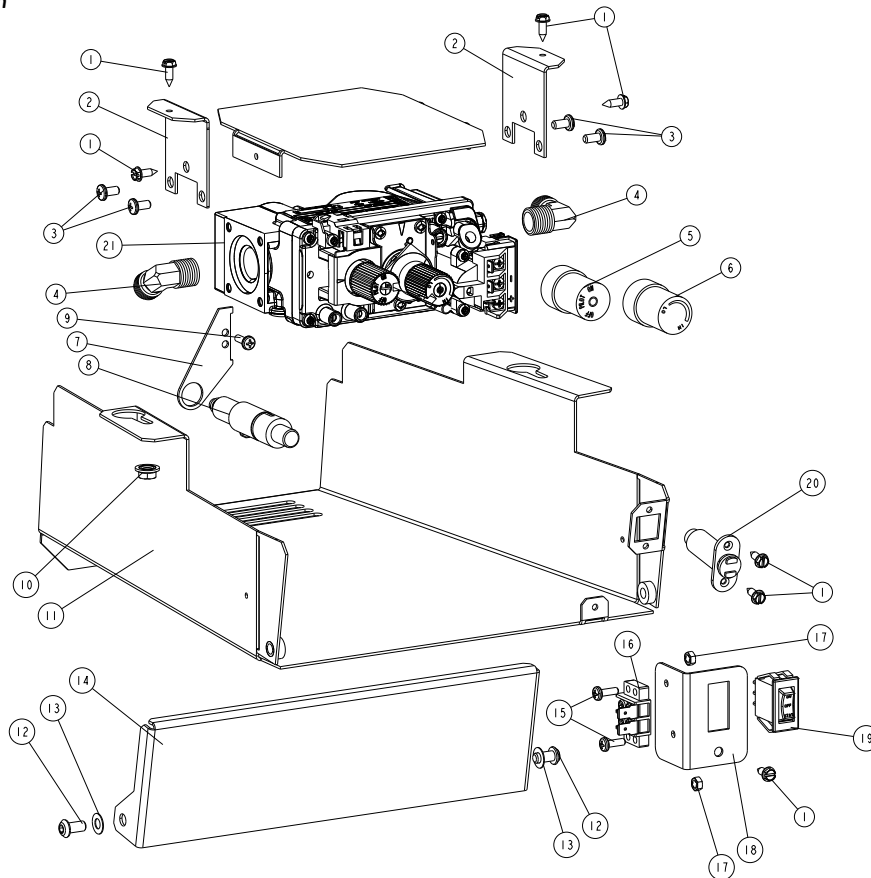


Figure 17.3
GF 160 DV Valve Assembly.

No.	Part No.	Description
1.	117917	Screw, #8 x 1/2" SM Blk Oxide
2.	226962	BRACKET, VALVE, GF160 DV
3.	117911	Screw, Pan Head, Phillips, 10-32x3/8"
4.	222292	Elbow, 90 deg, Brass 3/8 NTP X 3/8" Dia Flare
5.	129729	Extension Knob, On/Off, 1 1/2", SIT Nova 820/821
6.	129730	Extension Knob, Hi/Lo, 1 1/2", SIT Nova 820/821
7.	3902576	Igniter Bracket
8.	3902573	Piezo Ignitor Button
9.	117920	Screw, Pan Head, Phillips, M4 X 8, Zinc
10.	117968	Nut, M6 Serrated Flange plain
11.	226960	Controls Compartment, GF160 DV
12.	118034	Screw, M6 x 12, Button Head, Hex Socket, Blk

No.	Part No.	Description
		Oxide
13.	117588	Washer, Hinge M6 - 12mm OD x 6mm ID x 0.5mm Zinc
14.	22605992	Control Door, Matte Black
15.	117921	Screw, Pan Head, Phillips, M4 X 14, Blk Oxide
16.	129154	Terminal Block, 2 Pole 77 series
17.	117922	Nut, Hex M4, DIN 934, Plain
18.	226959	Bracket, Burner Switch, GF160 DV
19.	129153	Switch, Rocker, SPDT, Black, Marked "ON-OFF-STAT"
20.	224145	Magnetic Catch, Push to Open
21.	226947	Valve, NG, 30% TD, 3.5" WC, SIT 0820652