

Use only genuine Jøtul replacement parts.
 Do not substitute parts from any other
 manufacturer. See your local Authorized
 Jøtul Dealer or contact us directly:
 Jøtul North America
 55 Hutcherson Dr.
 Gorham, Maine 04038

8. Jøtul F 370 Illustrated Parts Diagram

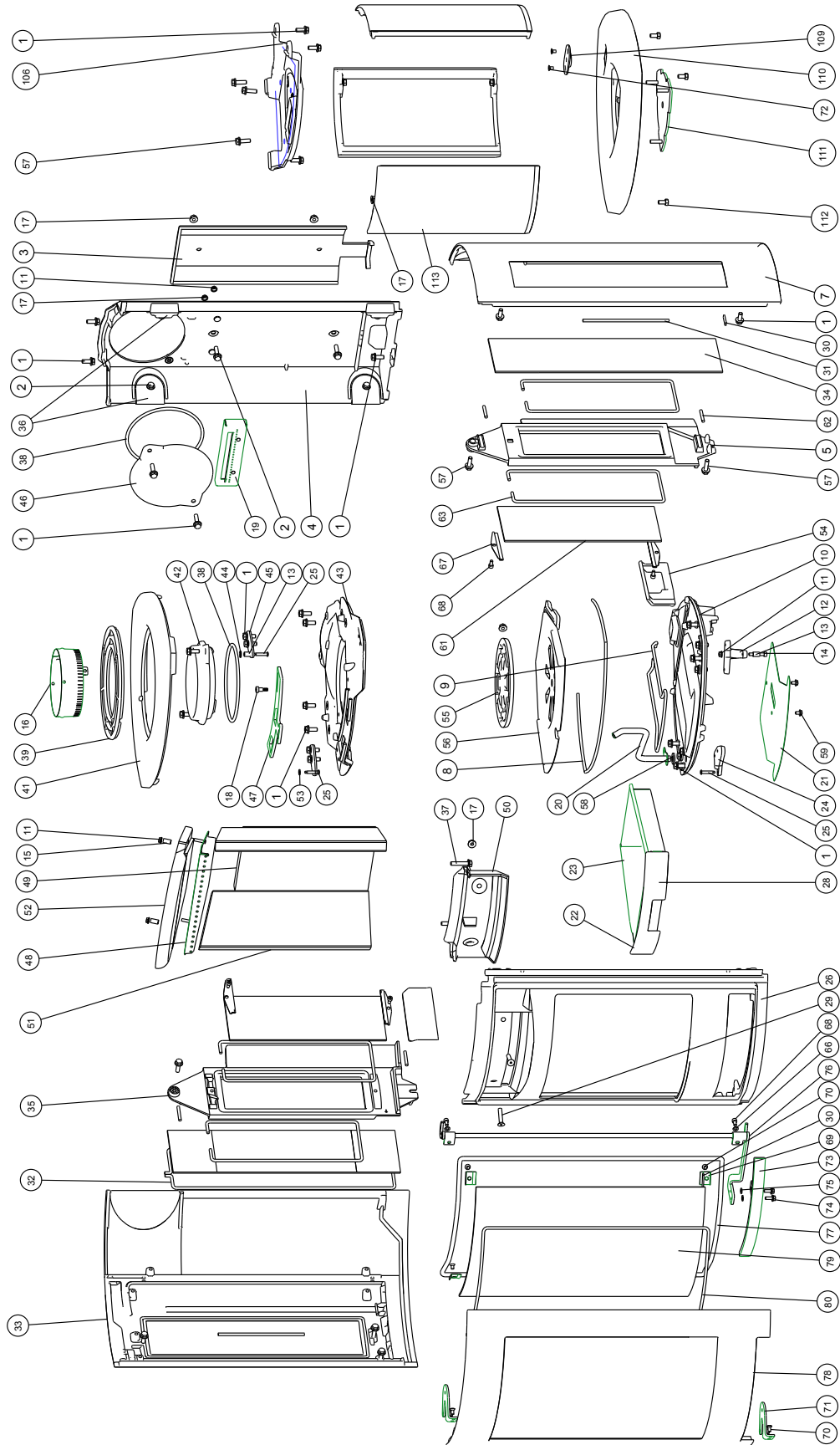


Figure 21.

8.1 Jøtul F 370 Parts List

No.	Description	Part Number
1.	Screw, Hex Cap, M8 x 20	117875
2.	Screw, Hex Cap, M8 x 30	117877
3.	Air Manifold, Rear	10448312
4.	Rear Plate	10446718
5.	Glass Holder, Right - inc. 5(1),30,62,63,67,68 (2 pcs.ea.)	156844
7.	Side Plate, Right - BP	10446592
8.	Gasket, Bottom Plate - LD 250-2 Ø6,4 x 930mm	200024
9.	Gasket, Ash Pan Rider - LD 250-2 Ø6,4 x 785mm	200024
10.	Bottom Plate	10434018
11.	Nut, Flange Hd Hex - M6	117968
12.	Lock Lower Door	10447318
13.	Sleeve, 2 x 15 mm	126109
14.	Screw, Cylinder Hd Internal Hex, M6 x 35	117789
15.	Sleeve, Ø.375 x .680 SS	223324
16.	Vent Adaptor	222793
17.	Nut, Hex Cap Flange Hd, M8	117881
18.	Screw, Socket Hd Shoulder, M6 8mm x 10mm	117982
19.	Secondary Air Manifold, Rear	222787
20.	Bracket, Top, Cast Convection Panel, 50 TL	222797
21.	Handle Shield	223294
22.	Ash Pan Front Panel, BP	10447992
23.	Ash Pan, steel	223311
24.	Door Hinge, Lower	10447292
25.	Hinge Pin, Ø6 x 33mm Blk Chromated	127075
26.	Front Plate, BP	10433792
28.	Ash Pan, Complete Assembly	156846
29.	Screw, Countersunk Internal Hex, M8 x 40	116913
30.	Gasket, V-125 x 40mm	127215
31.	Gasket, Side Glass - Outer, toward Front	200024
32.	Gasket, Side Glass - Outer, toward Side	200024
33.	Side Plate, Left - BP	10446492
34.	Glass, Side Outer -Rt & Lt	223729
35.	Glass Holder, Left - inc. 5(1),30,62,63,67,68 (2 pcs.ea.)	156845
36.	Cover, Side Bolt	10460212
37.	Screw, Hex Cap Flange M8 x 40	117879
38.	Gasket, LD 250-2 Ø6 -4 x 600mm	200024
39.	Air Outlet, Top - BP	10441692
41.	Top Plate, Upper - BP	10447092
42.	Smoke Outlet, Ø150 mm	156240
43.	Top Plate, Lower	10433818
44.	Push Nut, Ø6 x Ø15 mm Blk	117859
45.	Hinge, Lock Upper Door	10449818

No.	Description	Part Number
46.	Smoke Outlet Cover Plate	10441112
47.	Air Valve - BP	22329892
48.	Secondary Air Manifold Assembly, Front	157377
49.	Burn Plate, Rear - Skamol	223293
50.	Air Manifold, Front	10433912
51.	Burn Plate, L & R Side - Skamol	221805
52.	Baffle	223292
53.	Washer, Ø6.2 x 12 x 1.8 Brass	128632
54.	Burn Plate, Lower - L & R, cast iron	125960
55.	Grate	10434912
56.	Bottom Plate, Inner	10434812
57.	Screw, Hex Cap Flange, M8 x 25mm	117876
58.	Gasket, Air Tube - Manninglass	223310
59.	Screw, Hex Cap Flange, M6 x 10mm	9962
60.	Screw, Countersunk Cap Internal Hex - M8 x 16mm	117739
61.	Glass, Side - Inner, L & R	223209
62.	Gasket, Glass Holder LD 250-2 Ø6,4 x 40mm	200024
63.	Gasket, Glass Holder LD 250-2 Ø6,4 x 1000mm	200024
66.	Washer, Ø6 x Ø12 x 0,5mm	117588
67.	Glass Clip, Side Inner Glass - inc. gasket	153620
68.	Screw, Cylinder Head Internal Hex - M6 x 12mm	117726
69.	Glass Clip, Door Glass	128412
70.	Screw, Countersunk Cap Internal Hex - M6 x 10mm	118136
71.	Door Hinge - BP	22166292
72.	Screw, Machine Countersunk Hex - M6 x 12mm	117978
73.	Door Handle	223309
74.	Screw, Hex Cap Flange - M6 x 16	99625
75.	Washer, Ø6.4 x Ø12.5 x 1.6mm	117947
76.	Door Latch Assembly	221659
77.	Gasket, Door to Front Plate - LD 375-2 Ø9, 5 x 2100mm	129296
78.	Door, BP	10446392
79.	Door Glass, Ceramic	221648
80.	Gasket, Door Glass - LD 250-2 Ø6,4 x 2000mm	200024
106.	Pedestal Top	10448712
109.	Brake Cover - BP	10453692
110.	Pedestal Bottom - BP	10449192
111.	Anchor Plate	223289
112.	Screw, Hex Cap - M8 x 16	9912
113.	Pedestal Side - BP	10448892

Only use replacement parts provided through your authorized Jøtul dealer.